

## F09

SIP-Ready Multi-Biometric Access Control Terminal with Video Intercom Capability



Facial Authentication



RFID



Fingerprint



Video Intercom (SIP)

Compatible with

ZKBio CVSecurity

BioTime Cloud 2.0  
Indian Version

easy TimePro

ZKBio Zlink



## Introduction

F09 adopts the latest intelligent engineering facial authentication. It supports fingerprint, facial, card authentication with large capacity and speedy authentication, adopts ultimate antispoofing algorithm for facial authentication against almost all types of fake photos and videos attack, which offering secure biometric authentication.

F09 is an access control terminal featuring a video intercom function and supports ONVIF protocol. It fully improves the video intercom experience and can be compatible with video intercom indoor unit with SIP protocol (version 2.0).

Besides, F09 supports multiple communication protocols. Its firmware has AC push and can convert to TA push to , it is compatible with various AC or TA softwares. Also, it can change to BEST protocol to link with ZKBio Zlink (AC module).

## Features

- Visible Light Facial Authentication Technology and ZK Optical Fingerprint Verification
- Multiple Authentication Methods: Facial / Fingerprint / RFID / Password
- Available RFID Modules:125 kHz ID Card / 13.56 MHz IC Card
- HD Video Door Phone Via SIP Protocol (Version 2.0)
- Rechargeable backup battery.
- User Data Synchronization: User data can be downloaded/uploaded from one device to another via a USB drive
- Compatible with wireless doorbell (optional)
- Simple access control functions (Electric Lock; Door Sensor; Exit Button)

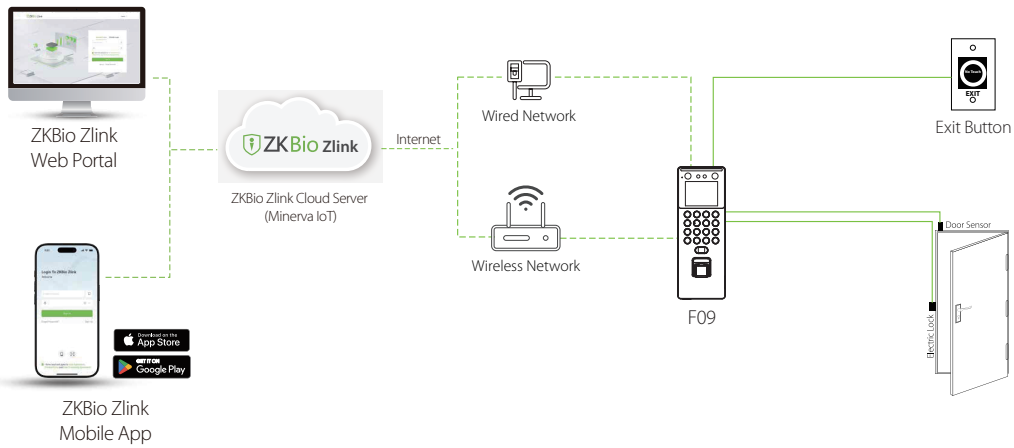
\* Download data using the USB driver and make sure to use the FAT32 format.

## Specifications

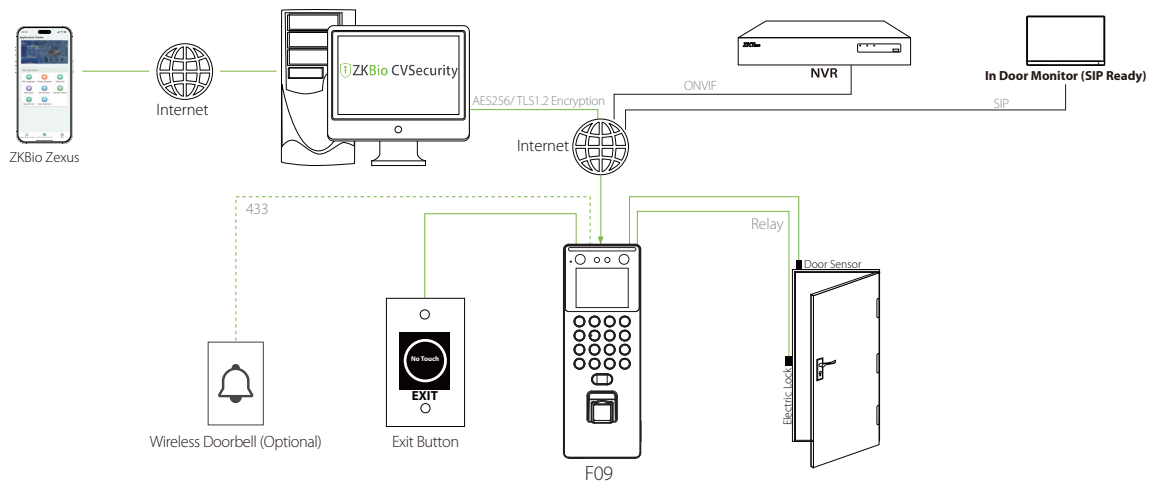
Model	F09
Display	2.4"@ TFT Color LCD Screen (320*240)
Camera	WDR Binocular Camera @ 1MP
Operation System	Linux
Hardware	CPU: Dual Core@1GHz RAM: 512MB; ROM: 8GB Speaker: 8ohm @1W Microphone: *1 (Sensitivity: -32 dB / Omni-directional / Signal-to-Noise Ratio: -32 dB/Impedance: 2.2kΩ) Supplement Light: Yes Physical Keypad: 17 Keys Fingerprint Sensor: ZK Optical Sensor
Authentication method	Fingerprint / Face / Card / Password (Physical Keypad)
Fingerprint Template Capacity	3,000 (1:N) (Standard)
Face Template Capacity	1,500 (1:N) (Standard)
Card Capacity	3,000 (1:N) (Standard)
User Capacity	3,000 (1:N) (Standard)
Transaction Capacity	150,000 (1:N)
Max. User Password Length	8 Digits
Biometric Authentication Speed	less than 0.5 sec (Fingerprint) less than 0.35 sec (Facial Authentication)
Touchless Biometric Authentication Distance	30cm to 200cm (Facial Authentication)
False Acceptance Rate (FAR) %	FAR ≤ 0.01% (Visible Light Facial Authentication) FAR ≤ 0.0001% ( Fingerprint )
False Rejection Rate (FRR) %	FRR ≤ 0.02% (Visible Light Facial Authentication) FRR ≤ 0.01% (Fingerprint )
Biometric Algorithm	ZKFace V4.0 ZKFingerprint V13.0 (Standard) /V10.0 (Optional)
Card Type	ID Card@125 kHz (Standard) IC Card@13.56 MHz (Optional)
Communication	TCP/IP*1, Wi-Fi (IEEE802.11b/g/n/ax) @ 2.4 GHz, USB: Type A (USB Drive Only )*1, Electric Lock*1, Door Sensor*1, Exit Button*1
Standard Functions	Backup Battery, ADMS, DST, Photo Capture, Event Photo Capture, Up to 14-digit User ID, Access Levels, Groups, Holidays, Record Query, Schedule Bell, Tamper Switch Alarm, Automatic Status Switch, Multiple AuthenticationMethods, SIP Client (Version 2.0), ONVIF (Compatible with Profile S, Profile T, Profile G, Profile C, Profile Q & Profile A) AC Push and TA Push Protocol Switch, HTTPs / SSH Backend Access, T9 Keyboard (Input)
Optional Functions	IC Card, Wi-Fi, Wireless Doorbell
Video Intercom	Video Intercom (ZKTeco Private Protocol via TCP/IP) Support Devices: Indoor Monitor: VT07-B01, VT07-B01-W Video Intercom (Standard SIP Protocol) Support Devices: Indoor Monitor: VT07-B22L, VT07-B26L-W Software: ZKBio CVSecurity Mobile App: ZKBio Zlink, ZKBio Zexus
Power Supply	DC 12V 1.5A Backup Battery (2000 mAh, Lithium Battery)
Operating Temperature	-5°C to 45°C
Operating Humidity	20% to 80% RH (Non-condensing)
Dimensions	205.20 mm*74.19 mm*33.30 mm (L*W*H)

Net Weight	0.258 Kg
Supported Software	Software: ZKBio CVSecurity, BioTime Cloud 2.0, Easy TimePro Mobile App.: ZKBio Zlink Cloud Service: ZKBio Zlink
Installation	Wall-mount (Compatible with Asian Gang Box / Single Gang Box)
Certifications	ISO14001, ISO9001, CE, FCC, RoHS

## Configuration



## BEST Protocol



## PUSH Protocol

## Dimensions (mm)

