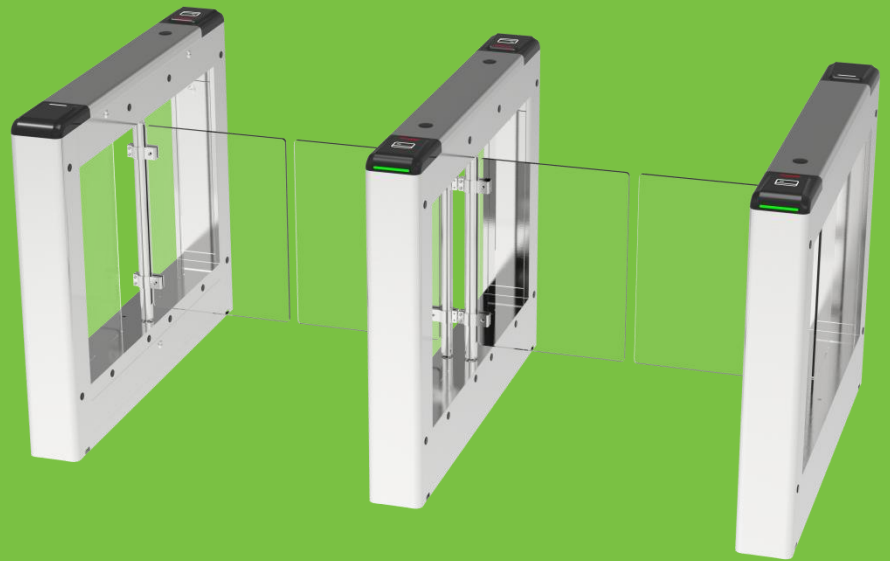


SBTL3000

Smart Swing Gate



Overview

The access gate is an intelligent access control device developed and manufactured by ZKTECO after years of research and development. This device seamlessly integrates mechanical, electronic, and microprocessor control systems with various reading and writing technologies. By configuring different types of reading and writing devices, incorporating reliable safety protection mechanisms, and utilizing real-time alarm systems and directional guidance interfaces, it achieves coordinated intelligent control and management of access points.

The device's exterior is formed from stamped SUS304 stainless steel plates combined with high-performance injection-molded plastic, resulting in an aesthetically pleasing, rust-resistant, and durable design. It features standard electrical interfaces, allowing for the convenient integration of various authentication methods—including facial recognition, fingerprint, palm print, iris scanning, RFID, and QR codes—to provide a civilized and orderly passage for authorized personnel while preventing unauthorized access. Additionally, the system incorporates features specifically designed to meet fire safety requirements, ensuring unobstructed passage during emergencies to facilitate timely evacuation.

Features

- ◆ Outdoor waterproof design for direct open-air use, with a protection grade up to IP54 (internal test).
- ◆ The top cover is fixed by a push-pull buckle, avoiding the problem of being unable to open the cover when installing face recognition equipment due to the gate being fixed against the wall.

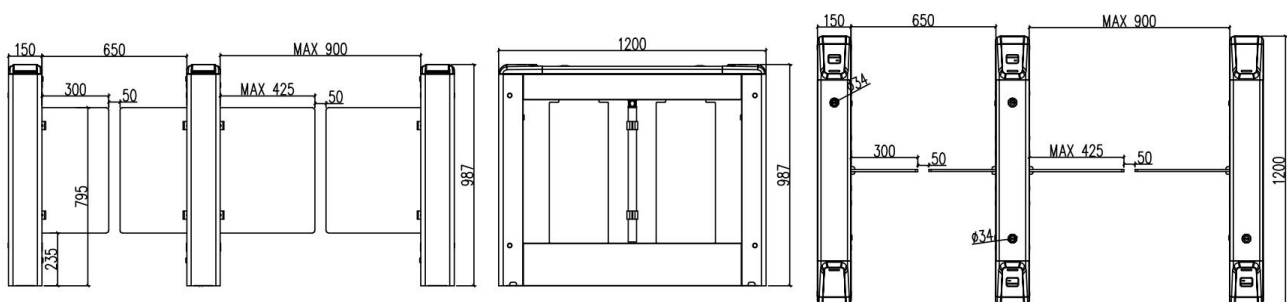
- ◆ The movement adopts a maintenance-free DC brushless motor, electronic anti-collision movement, servo drive system and new digital positioning technology.
- ◆ With fault self-detection and acousto-optic alarm prompt functions for convenient user maintenance and operation.
- ◆ Light indication: High-brightness passage light for status indication and passage guidance.
- ◆ Alarm prompt: Automatic alarm for unauthorized access or gate rushing.
- ◆ Fire safety: The device is linked with fire protection systems. When a fire signal is triggered or power is cut off, the swing arm will automatically stay open and reset to block passage when power is restored.
- ◆ New generation industrial-grade ARM control system with added multi-functional digital setting, encryption and reset functions.
- ◆ Can be connected to control signals, buttons or remote controls output by any control device to realize one-way and two-way passage control.
- ◆ Automatic reset function: The swing arm swings 90 degrees and resets automatically after detecting the passage of people and objects; if no passage is made within the specified time (multi-gear adjustable delay) after personnel verification, the system will automatically cancel the passage permission and reset.
- ◆ Anti-reversal function: If the swing arm is reversed by external force during the reset process, it will automatically activate reverse thrust and send an alarm, and return to the zero position to resume passage after the external force disappears.
- ◆ Automatic protection function: If the normal movement of the swing arm is blocked by continuous external force, the device will automatically detect it for more than 20 seconds, then activate automatic protection and enter sleep mode. The gate will resume normal operation when a valid signal is input next time.
- ◆ Multi-level anti-collision buffer function: When unauthorized access or gate rushing occurs, the swing arm buffers at the corresponding angle and activates immediate reverse thrust with an alarm at the same time, which not only achieves humanized anti-injury protection but also greatly reduces mechanical damage caused by frequent or continuous collisions.

Specification

Product Model	SBTL3000 (1 Main unit + 1 Sub unit) SBTL3200 (1 dual-movement unit)	Channel Width	600mm - 900mm
---------------	--	---------------	---------------

Product Size	Bare unit: 1200*150*987mm (±2mm) Packaged: 1240*190*1030mm (±5mm)	Communication Interface	RS232, RS485 optional
Chassis	SUS304 stainless steel, 1.2mm/0.8mm	Packaging Method	Carton + inner liner + wooden base plate
Swing Arm	Hoop-fixed: Transparent acrylic (standard) stainless steel (optional)	Swing Arm Height	Acrylic: Upper 795mm, Lower 235mm Stainless steel: Upper 750mm, Lower 350mm
Side Cover Plate	Single channel: 4 pieces Dual movement: 2 pieces	Weight(±1kg error)	Bare unit: 28.5kg (main), 27kg (slave), 33.5kg (dual-movement) Packaged: 35.5kg (main), 34kg (slave), 40.5kg (dual-movement)
Drive Motor	DC brushless motor	Power Supply Voltage	AC220±10%V, 50HZ
Working Environment	Indoor/Outdoor	Working Temperature	-20°C to 70°C (internal test data; temperature control device is required when ambient temperature is below -20°C)
Movement Service Life	More than 8 million cycles (internal test data)	Infrared Correlation	4 pairs (10 reserved installation positions in total, expandable on demand)
Passage Speed	Normally closed mode: 30persons/min Normally open mode: 50 persons/min	Door Opening/Closing Speed	0.6 - 10S (adjustable)
Face Recognition Hole	Standard face recognition hole plug included	Other Configurations	Internal wiring trough, stainless steel maintenance wet wipes, expansion bolts, certificate of conformity

Dimension



Application



Factory



Construction Site



Residential
Community



Clubhouse



Exhibition



Other

*1. All parameters and data above are subject to the ZKTeco laboratory test report; 2. The product images on the above page are for illustrative purposes only, and the actual product may vary slightly. Please refer to the actual product.

