



# SpeedFace-V5

Face & Palm Verification Terminal  
with Video Intercom Capability



Wide Pose Angle  
Acceptance



Wide Palm Pose Angle  
Acceptance



Speedy  
Recognition

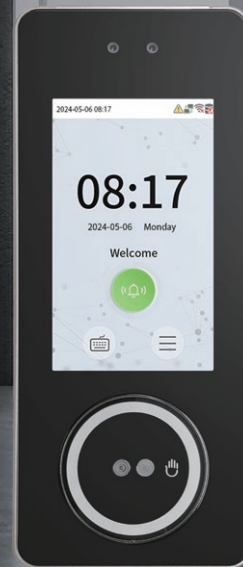


Touchless for  
Better Hygiene



Video Intercom  
(SIP)

Compatible with



SpeedFace-V5

**SpeedFace-V5** is a smart access control terminal equipped with the new visible light face and palm 2-in-1 technology, which applies the latest face and palm algorithms and advanced computer vision technology. It supports a variety of identification methods, including face/palm/card, etc. Besides, the terminal offers large capacity and speedy recognition.

SpeedFace-V5 eliminates hygiene concerns with contact less biometrics technology. It is also equipped with anti-spoofing algorithms for facial and palm recognition to defend against almost all types of fake photo and video attacks. Importantly, high-precision palm recognition takes only 30ms per hand. The Palm data is then compared to the maximum of 5,000 palm templates.

The terminal with advanced biometric technology, combined with face and palm recognition, provide you with a secure, flexible and efficient access solution. Besides, SpeedFace-V5 is an access control terminal featuring a video intercom function. It fully improves the video intercom experience and can be compatible with video intercom indoor unit with SIP protocol.

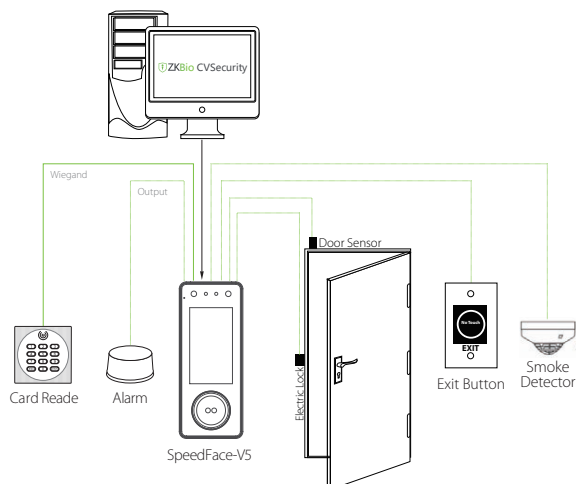
## Features

- Visible Light Facial & Palm Recognition
- Better hygiene with touchless biometric authentication
- Anti-spoofing algorithm against print attack (laser, color and B/ photos), videos attack and 3D mask attack
- Available card modules: 12.5 KHz EM card / 13.56MHz IC card
- New palm module adapts to a variety of lighting conditions, and is equipped with multi-color LED lights to assist in palm positioning to enhance the user experience
- HD Video Door Phone Via SIP Protocol. Compatible with ZKTeco SIP Video Intercom Indoor Monitor

## Specifications

Display	5-inch Touch Screen
Face Capacity	10,000
Palm Capacity	5,000
Card Capacity	10,000
Transactions	200,000
Operation System	Linux
Standard Functions	ID Card, ADMS, T9 Input, DST, Camera, 14-digit User ID, Access Levels, Groups, Holidays, Anti- passback, Record Query, Tamper Switch Alarm, Multiple Verify Modes.
Hardware	900MHz Dual Core CPU, Memory 512MB RAM / 8G Flash, 2MP WDR Low Light Camera, Adjustable Light Brightness LED
Communication	TCP / IP, Wi-Fi, Wiegand input / output, RS485
Access Control Interface	3rd Party Electric Lock, Door Sensor, Exit Button, Alarm output, Auxiliary Input
Optional Function	13.56MHz IC Card, ZSmart
Facial Recognition Speed	less than 1 sec (Facial Recognition) less than 0.35 sec (Palm Recognition)
Touchless Biometric Recognition Distance	1cm to 100cm (Facial Recognition) 5cm to 15cm (Palm Recognition)
False Acceptance Rate (FAR) %	FAR ≤ 0.01% (Visible Light Facial Recognition) FAR ≤ 0.01% (PalmElite3.3.3)
False Rejection Rate (FRR) %	FRR ≤ 0.02% ( Visible Light Facial Recognition) FRR ≤ 0.17% (PalmElite3.3.3)
Biometrics Algorithms	ZKFace V3.9 & PalmElite3.3.3
Power Supply	12V 3A
Operating Humidity	10% to 90%
Operating Temperature	-10°C to 45°C (14°F to 113°F)
Dimensions (W*H*D)	92.3 * 227.3 * 24.5 (mm)
Supported Softwares	ZKBio CVSecurity, easy TimePro

## Configuration



## Dimensions (mm)

