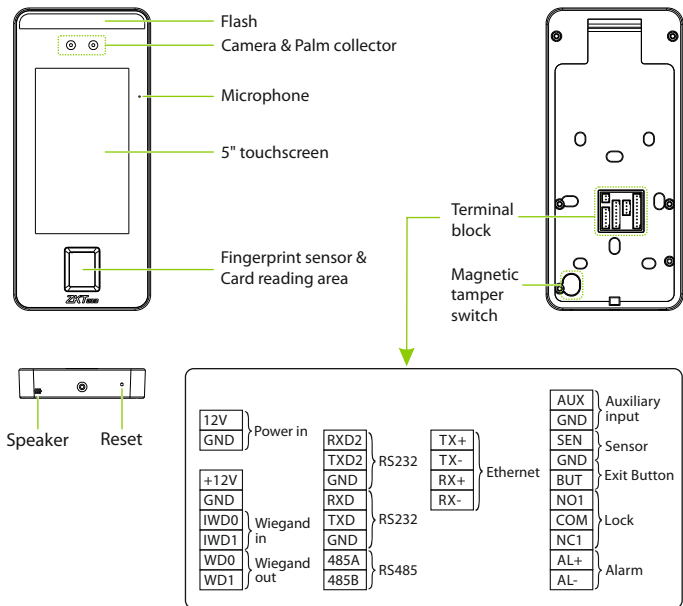


Quick Start Guide

SpeedFace - V5L

Version: 1.0

Overview



Installation Environment

Please refer to the following recommendations for installation.



INDOOR USE



KEEP DISTANCE



AVOID GLASS
REFRACTION

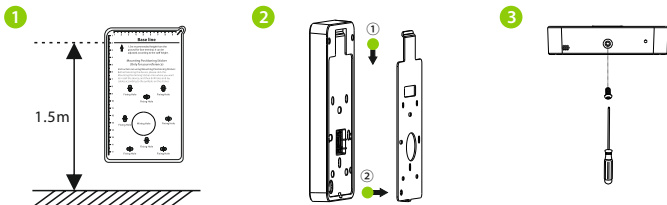


AVOID DIRECT
SUNLIGHT AND EXPOSURE



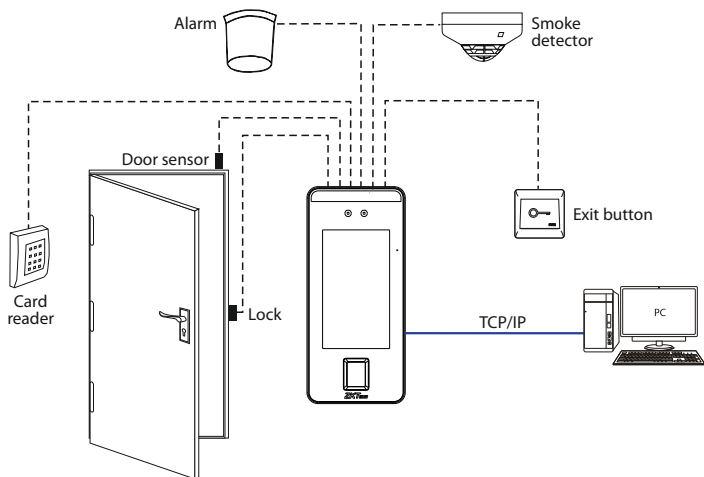
KEEP EFFECTIVE
DISTANCE 0.3-2m

Device Installation

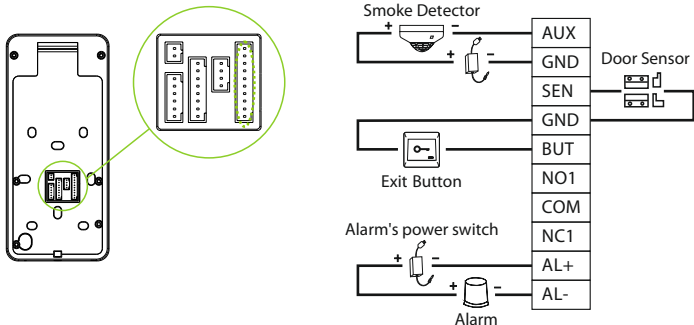


- ① Attach the mounting template sticker to the wall, and drill holes according to the mounting paper. Fix the back plate on the wall using wall mounting screws.
- ② Attach the device to the back plate.
- ③ Fasten the device to the back plate with a security screw.

Standalone Installation



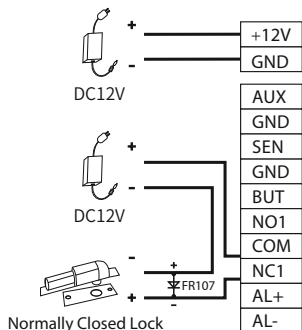
Door Sensor, Exit Button & Alarm Connection



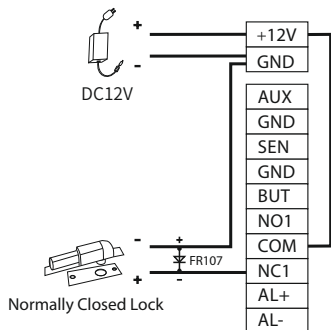
Lock Relay Connection

The system supports **Normally Opened Lock** and **Normally Closed Lock**. The **NO LOCK** (normally opened at power on) is connected with 'NO1' and 'COM' terminals, and the **NC LOCK** (normally closed at power on) is connected with 'NC1' and 'COM' terminals. Take NC Lock as an example below:

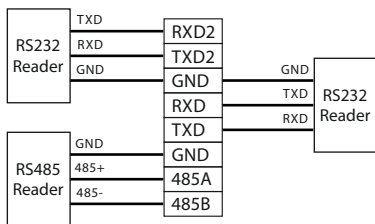
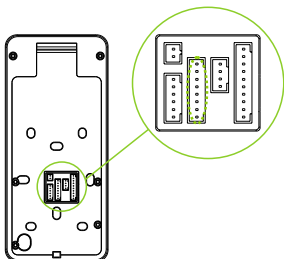
1) Device not sharing power with the lock



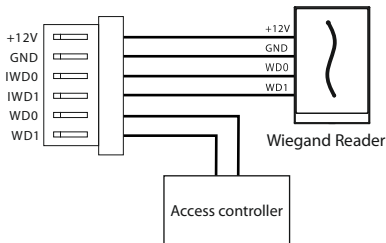
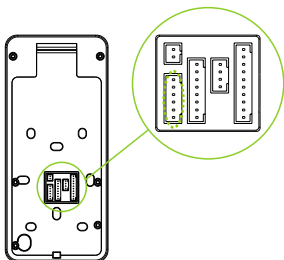
2) Device sharing power with the lock



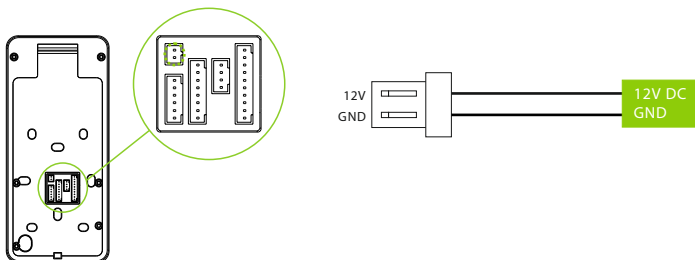
RS485 and RS232 Connection



Wiegand Reader Connection



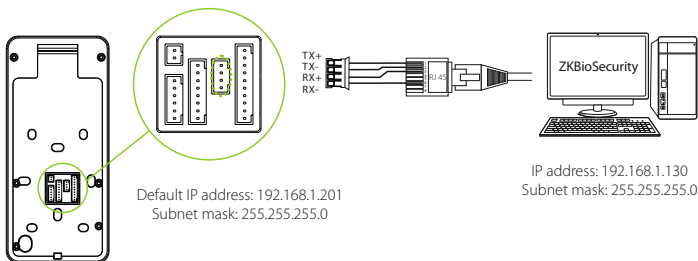
Power Connection



Recommended power supply

1. 12V \pm 10%, at least 3000mA.
2. To share the power with other devices, use a power supply with higher current ratings.


Ethernet Connection




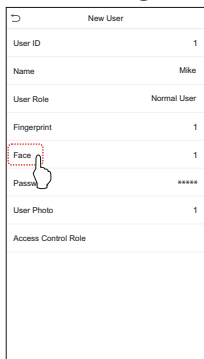
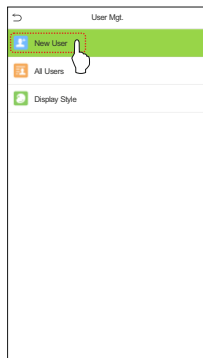
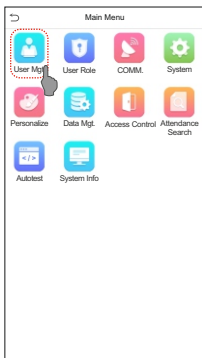
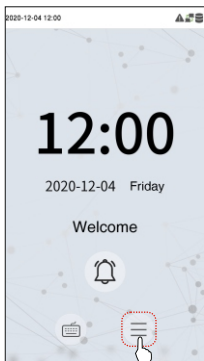
Click [COMM.] > [Ethernet] > [IP Address], input the IP address and click [OK].

Note: In LAN, IP addresses of the server (PC) and the device must be in the same network segment when connecting to ZKBioSecurity software.

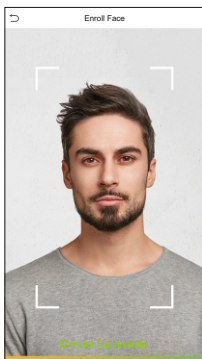
User Registration

When there is no super administrator set in the device, click on  to enter the menu. After setting the super administrator, the system will request for the administrator's verification before entering the menu. For the security purpose, it is recommended to register a super administrator at the first time you use the device.

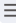

Click on  > [User Mgt.] > [New User] to register a new user. Settings include entering user ID and name, registering fingerprint, face, password and user photo, setting user role.

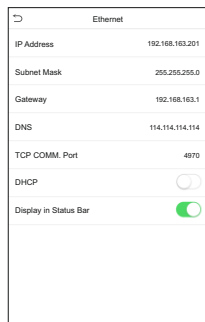
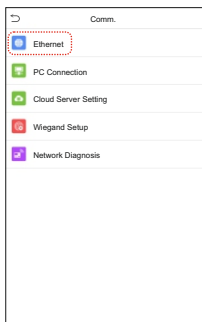
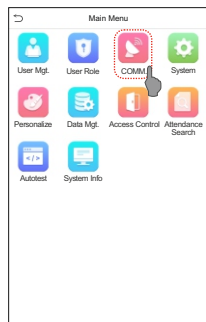


New User	
User ID	1
Name	Mike
User Role	Normal User
Fingerprint	1
Face	1
Password	*****
User Photo	1
Access Control Role	




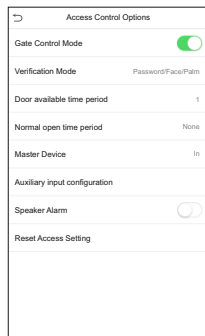
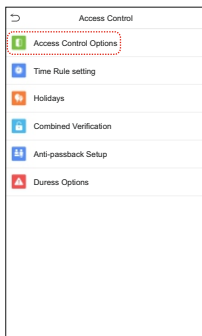
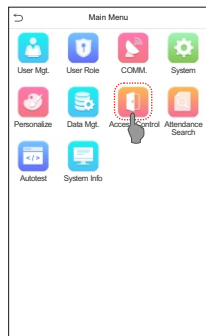
Ethernet Settings

Click on  > [COMM.] > [Ethernet] to set the network parameters. If the TCP/IP communication of the device is successful, the icon  will be displayed in the upper right corner of the standby interface.



Access Control Settings

Click on  > [Access Control] to enter the access control management interface and set relevant parameters of access control.



LAN Video Intercom Function Settings

Step 1: Install the ZKBioSecurity software and ZKBio VMS Plugin

1. Choose the "Video-VMS" module of the ZKBioSecurity software to install.
(The Video module and the Video-VMS module cannot be installed together.)
2. Install the **ZKBio VMS Plugin**.
(To recognize the intercom function, the ZKBioSecurity software and the ZKBio VMS Plugin must be opened simultaneously.)

Step 2: Configuration Parameters

1. Add site on the Video-VMS Plugin

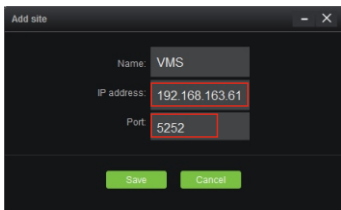
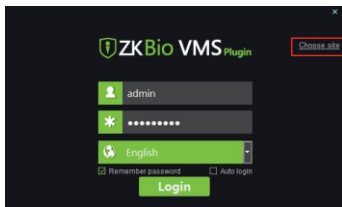
- a. Click [Choose site] > [Site management] > [Add] on the login interface, enter the Name, IP address, and port to add a site.

IP Address: Enter the local IP address.

Port: The default port number is 5252.

- b. Login to the Video-VMS plugin after adding the site. The user name and the initial password are both "admin".

(When the Video-VMS plugin is connected successfully to the ZKBioSecurity, the password changes to the admin user password of the ZKBioSecurity.)



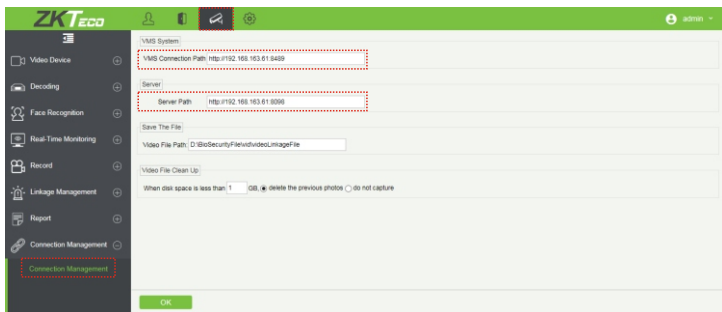
2. Configure the connection path of the ZKBioSecurity and VMS plugin

Click [Video] > [Connection] > [Connection Management] to change the path, as shown in the following figure.

VMS Connection Path: "<http://local IP address: port>", Port: 8489 by default.

(eg., <http://192.168.163.61:8489>).

Server Path: "<http://server IP address: port>". The port is the service port set during installation (not the ADMS port) (eg., <http://192.168.163.61:8098>).

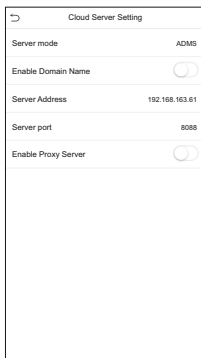
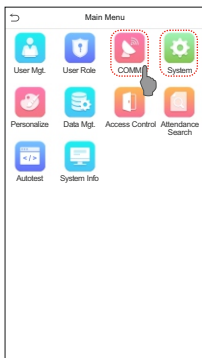


3. Configure the parameters on the device

- Click on > [COMM.] > [Cloud Server Setting] to set the server address and server port, that is, the IP address and port number of the server after the software is installed. The icon is displayed in the upper right corner of the standby interface when the device communicates with the server successfully.
- Click on > [System] > [Video intercom parameters] > [Intercom Server Setting] to set the server address and server port.

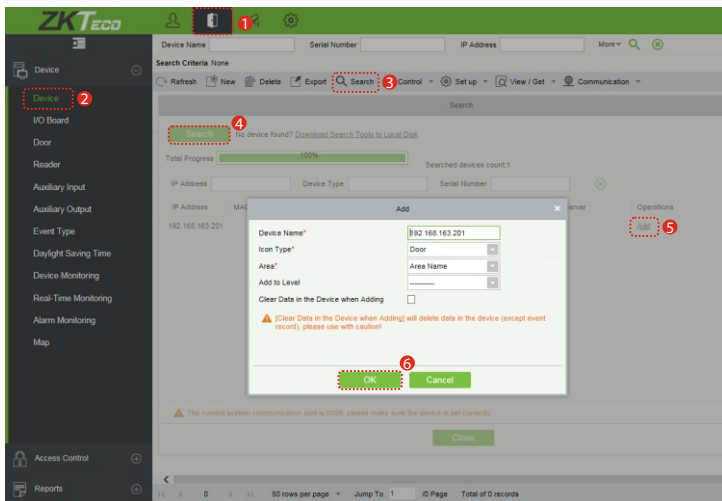
Server Address: Enter the ZKBioSecurity installation IP address.

Server Port: It is the service port set during installation (not the ADMS port).

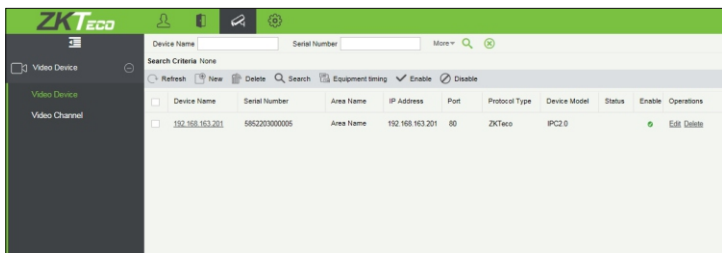


Step 3: Adding device on ZKBioSecurity software

- a. Click [Access] > [Device] > [Device] > [Search] to add the device on the ZKBioSecurity software.

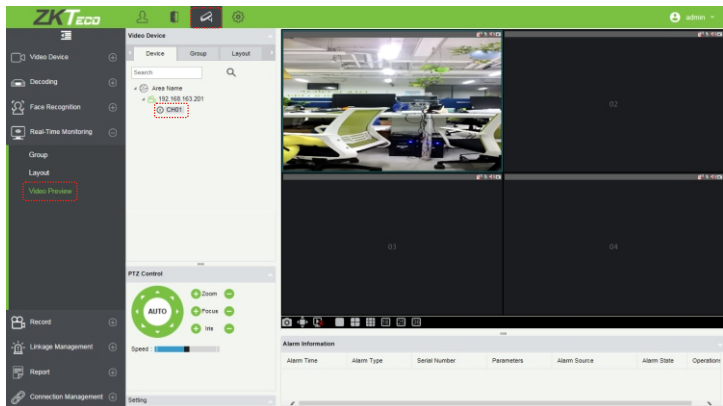


- b. After the device is added successfully to the access module, it automatically adds to the video module. User can click [Video] > [Video Device] > [Search] to view.
(If the device is not added to the Video module, please check whether the parameter settings are correct.)



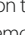
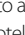


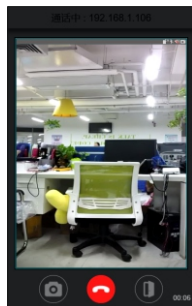
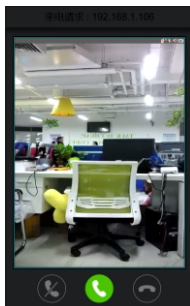
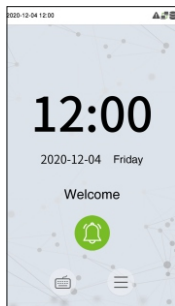
Step 4: Video Preview

Click [Video] > [Real-Time] > [Video Preview] to enter the preview interface of the device.



Step 5: Device Call

Click on the  icon on the main interface of the device to get to the call window. The user can click  icon to accept the call, click  icon to take a snapshot, or click  icon to open the door remotely, as shown in the following figure. For more details, please refer to the User Manual.



Connect to ZKBio Talk

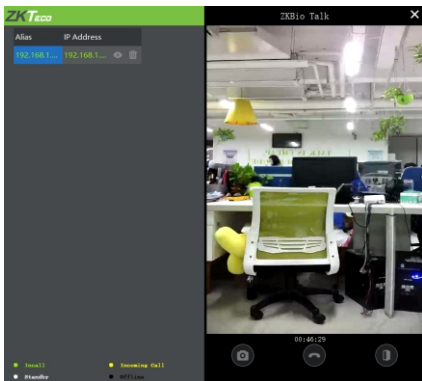
a. Keep the parameter settings of ZKBioSecurity software unchanged. And then install the ZKBioTalk software.






b. Click on  > [System] > [Video intercom parameters] > [Intercom Server Setting] on the device, to change the server address and server port.

Server Address: Enter the current server installation IP address.

Server Port: The default server port is 25550.

Intercom Server Setting	
Server Address	192.168.163.61
Server port	25550

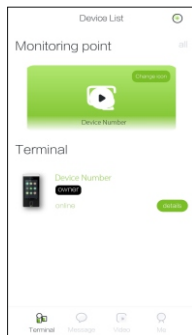
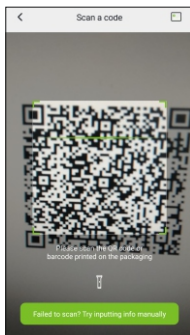
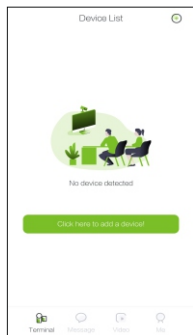


c. Double click the  icon to open the ZKBioTalk software. Then click on  icon on the main interface of the device to get to the call window. The user can click  icon to accept the call, click  icon to take a snapshot, or click  icon to open the door remotely.


For more details, please refer to the User Manual.

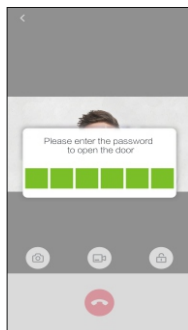
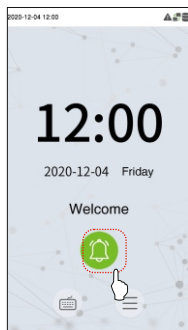
Connect to ZKView

After downloading and installing the ZKView APP on the phone, open the APP and add the device by scanning the QR code. Click **[System] > [Video intercom parameters] > [QR code binding]** on the device to enter the QR code interface. The process is as follows:



Video Door Phone Connection

Visitors need to press the  on the device to get to the call window, and the phone rings. The user can accept or decline the call. After the user accepts the call, it will open the video door phone interface. Enter the password to unlock the door.



ZKTeco Biometrics India Pvt Ltd.

Address :B-1, Khata No.31, Devasandra Industrial Estate,
Whitefield Main Road, Beside Phoenix Mall,
Mahadevapura, Bengaluru - 560048, Karnataka, India

Phone :080 6828 1342

www.zkteco.in

